

# CHASING M2

*FREEDOM to ATTACHMENT*



[www.chasing.com](http://www.chasing.com)

**CHASING M2** is a professional underwater ROV/Drone designed for professional users and industrial applications. M2 has 8 Vectored Thrusters layout which allows OMNI movement in all directions. The Maximum speed is 3 Knots, depth is 100 meters (330 FT) and the maximum horizontal radius is 200 meters (660FT). Compatible with sophisticated attachments such as Robot Claw, GoPro camera, external LED lights and laser scaler etc. CHASING M2 offers a built in 4K/ 1080p and 12 megapixel EIS image stabilization camera, 4000 lumen LED lights, removable battery and removable SD memory card. The aluminum alloy compact body (weighs less than 4.5KG / 10lbs) allows single person operation and Quick-Deployment in 3 minutes. The CHASING M2 is your portable, easy use and reliable light industrial underwater ROV.



8 Vectored-Thrusters  
Layout, OMNI  
movement



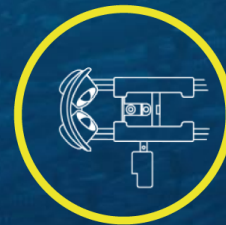
Swappable  
Battery



3 Knots speed  
100 meters depth rating  
200 meters radius



4K+EIS Image  
Stabilization,  
F1.8 Aperture



Sophisticated  
Attachments



Anti-Stuck  
Motor

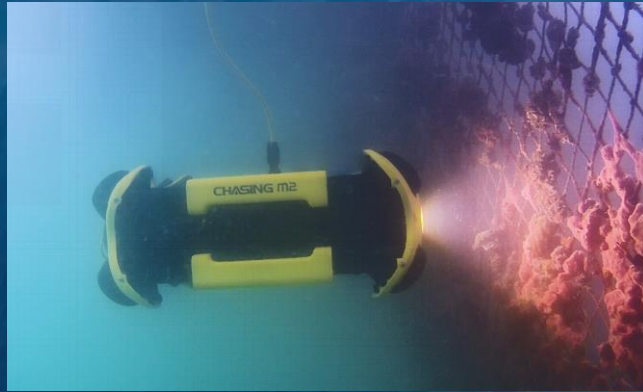


Removable SD memory  
card, download anytime  
and anywhere



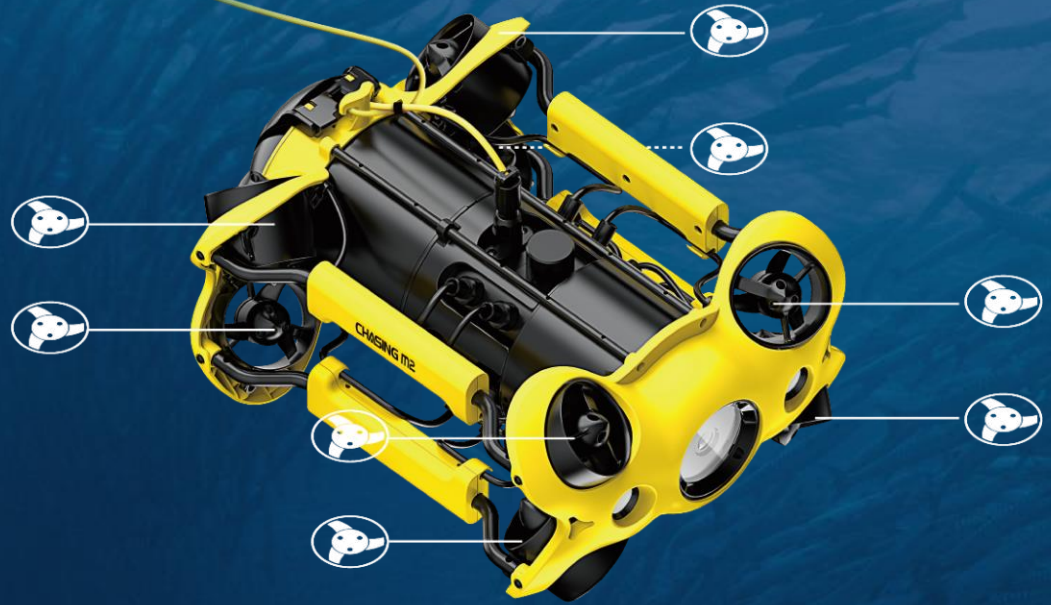
User Friendly  
Interaction





- Scientific exploration
- Underwater photography
- Hull&Dock Inspection
- Aquaculture Inspection
- Underwater Search and Rescue

**CHASING M2**



## 8 Vectored-Thrusters Layout, OMNI movement

● ROV < 4.5KG / 10 lbs

M2 has 8 Vectored Thrusters layout which allows OMNI movement in all directions. The aluminum alloy compact body allows single person operation and Quick-Deployment in 3 minutes.

**CHASING M2**



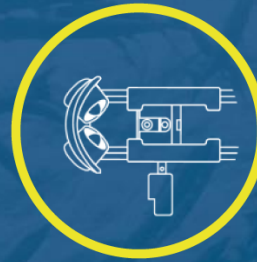


## Swappable Battery

The default 97.68Wh lithium battery , Optional 200WH Battery, CHASINGS replaceable battery will make your operation time unlimited.



**CHASING M2**

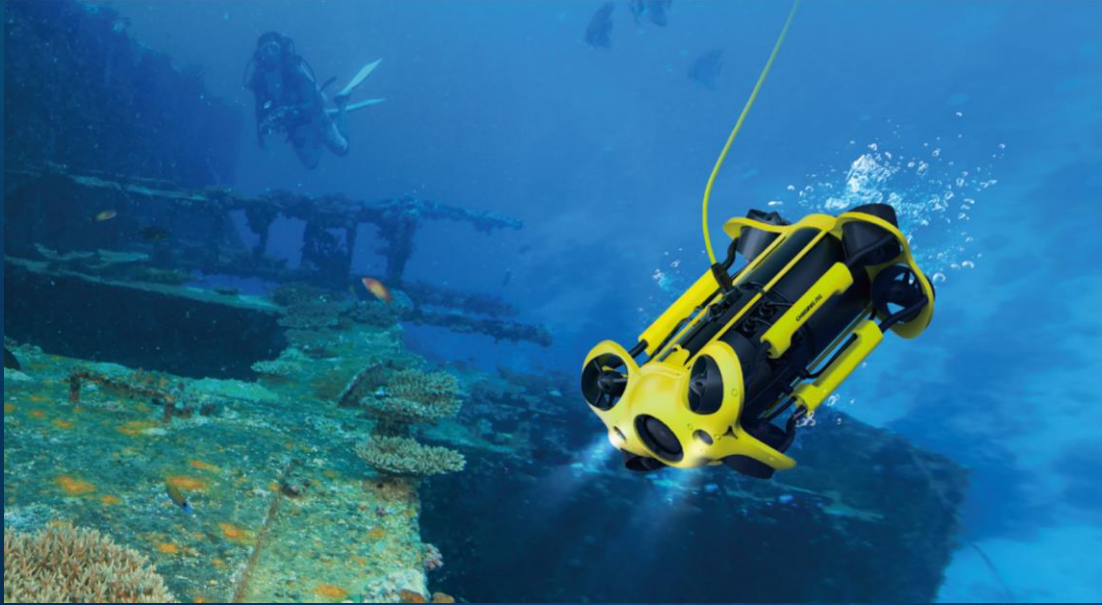


## Sophisticated Attachments

Compatible with sophisticated attachments such as Robot Claw, GoPro camera, external LED lights and laser scaler etc. The maximum attachable capacity is 1.5KG (3.3lbs) , design for many different industry needs.

**CHASING M2**





3 Knots speed  
100 meters depth rating  
200 meters radius

M2'S speed can allow you to move locations quickly. Diving up to 330 ft will allow adventures at the deepest depths. The maximum horizontal radius is 200 meters (660FT).

**CHASING M2**



## 4K+EIS Image Stabilization, F1.8 Aperture

M2 offers 4K and 1080p video and 12 megapixel photos. Equipped with 1/2.3 SONY CMOS, EIS anti video-shake feature, with 4000 lumen LED lights to capture underwater details.



**CHASING M2**





## Anti-Stuck Motor



The patented Anti-Stuck Motor technology is adopted to greatly reduce the failure probability of the motor getting stuck in the sand, and it can operate safely and reliably in all kinds of complicated underwater environments.



Removable SD memory card,  
download anytime and  
anywhere

The 64G SD memory card is removable, and users can  
choose SD cards of different capacities, up to 512G.





## User Friendly Interaction



YouTube



Professional remote control and software APP. Depth, temperature, and other parameters can be recorded at the same time. Support live broadcast, Social media sharing, Taking photos while recording video, time-reducing photography, quick editing features , HDMI output. All around improved user-experience.



CHASING E-Reel  
(optional)



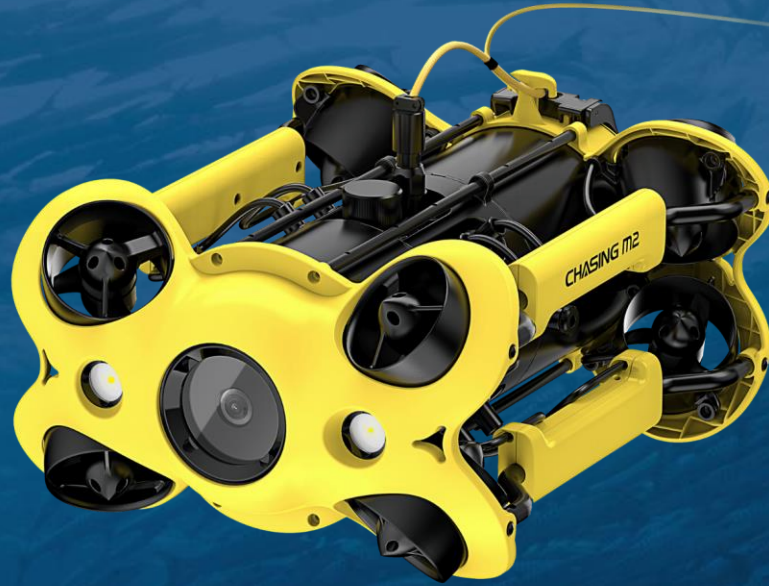
Professional remote control  
and Software APP

HDMI

**CHASING M2**



CHASING E-Reel  
( optional )



ROV



Remote Control

**CHASING M2**



<b>ROV</b>	SIZE	380*267*165 mm
	WEIGHT	4.5KG
	MAX DEPTH	100 Meters
	MAX SPEED	1.5 m/s (3 Knots)
	RUNTIME	2-4 Hours
	BATTERY CYCLE LIFE	>300 Cycle
	Operating Temperature	-10°C~45°C
<b>SENSOR</b>	IMU	3 axis gyro/accelerometer/compass
	DEPTH SENSOR	≤ ±0.25m
	TEMPERATURE SENSOR	≤ ±2°C
<b>CHARGER</b>	POWER	2.9A/25.2V
	CHARGING TIME	2H
<b>LED</b>	BRIGHTNESS	2*2000 Lumens
	COLOR TEMPERATURE	5000K~5500K
	CRI	85
	DIMMING	THREE GEARS

<b>CAMERA</b>	CMOS	1/2.3 (SONY)
	LENS	F1.8
	FOCUS	1m
	ISO RANGE	100-6400
	FOV	152
	MAX RESOLUTION	12 Meg Pixel
	FORMAT	JPEG/DNG
	VIDEO	4K@30Fps 1080P@30Fps/Slow Motion (120Fps) 720P@30Fps/Slow Motion (240Fps)
	VIDEO STREAM	60M
	VIDEO FORMAT	MP4
	SD Card	64G

An underwater scene featuring a large, rusted metal shipwreck structure. Several divers are visible around the wreck, some swimming and others appearing to be working on it. The water is a deep, dark blue, and the overall atmosphere is mysterious and industrial.

# CHASING

Chasing-Innovation Technology Co., Ltd.  
[www.chasing.com](http://www.chasing.com)